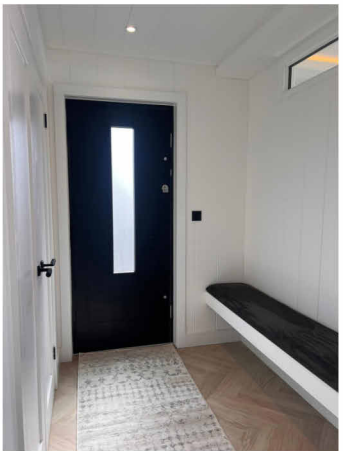
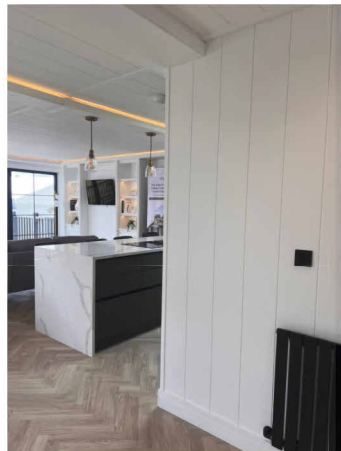
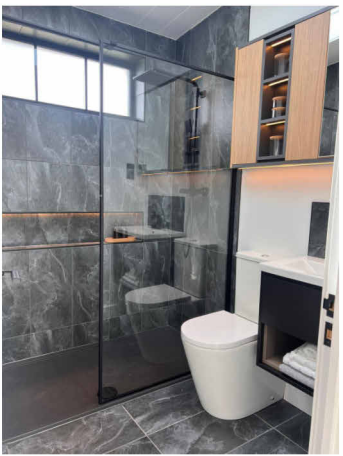
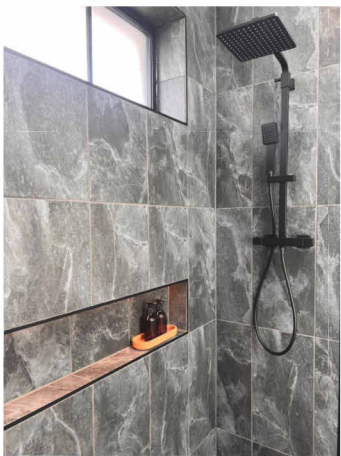
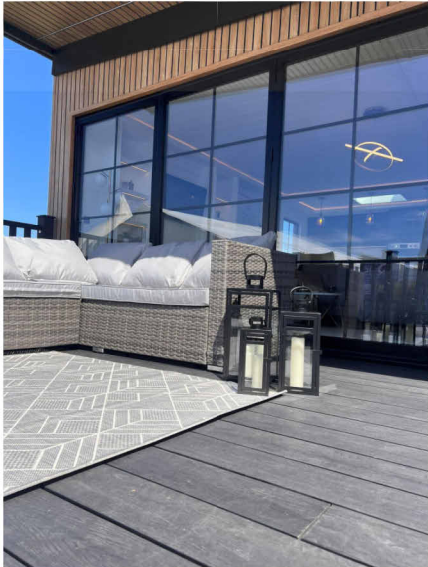
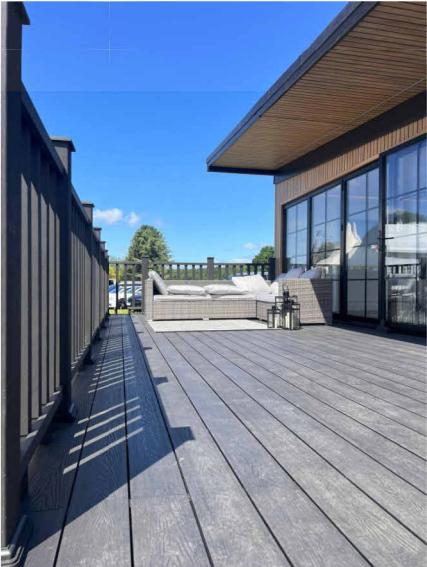
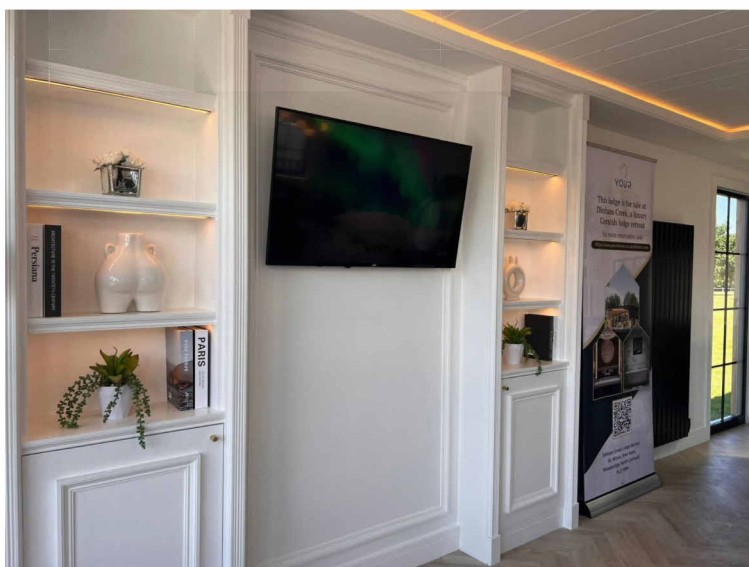
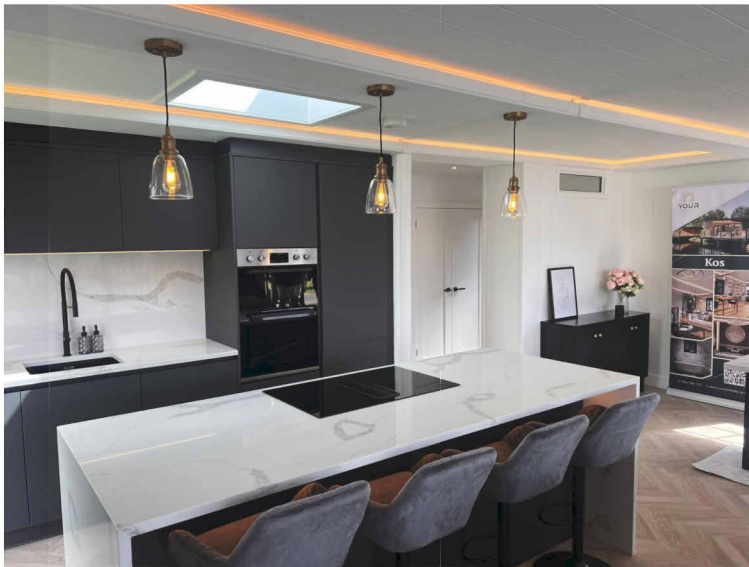
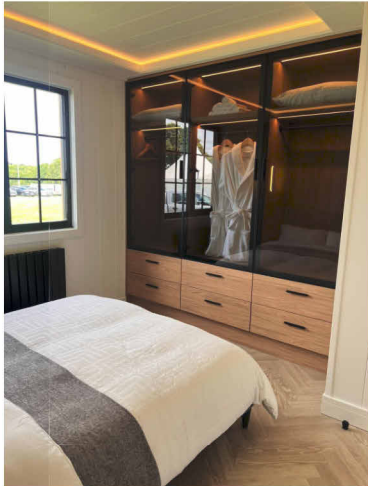
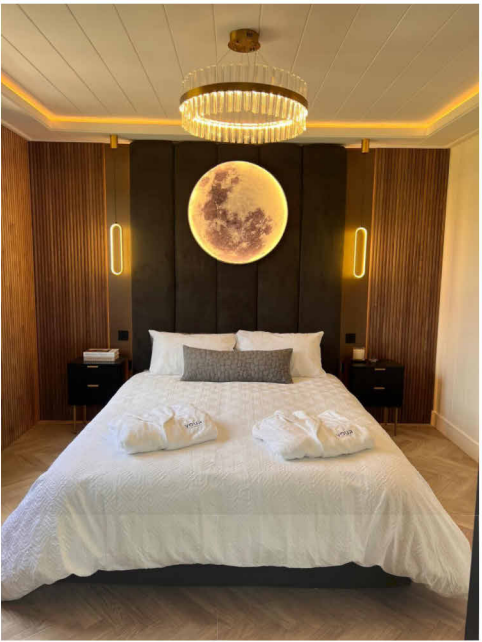
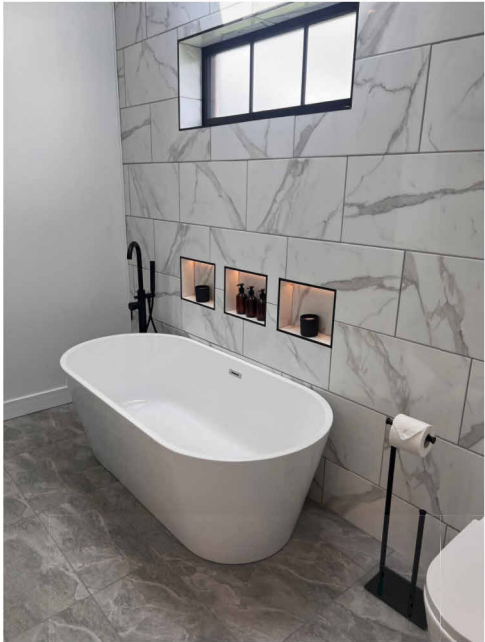




Kos DESIGN PACK

45ft x 22ft - 2 BEDROOM



Notes:

1	ISSUED FOR INFORMATION		
REV	DESCRIPTION	BY	DATE
STATUS: Project Status			

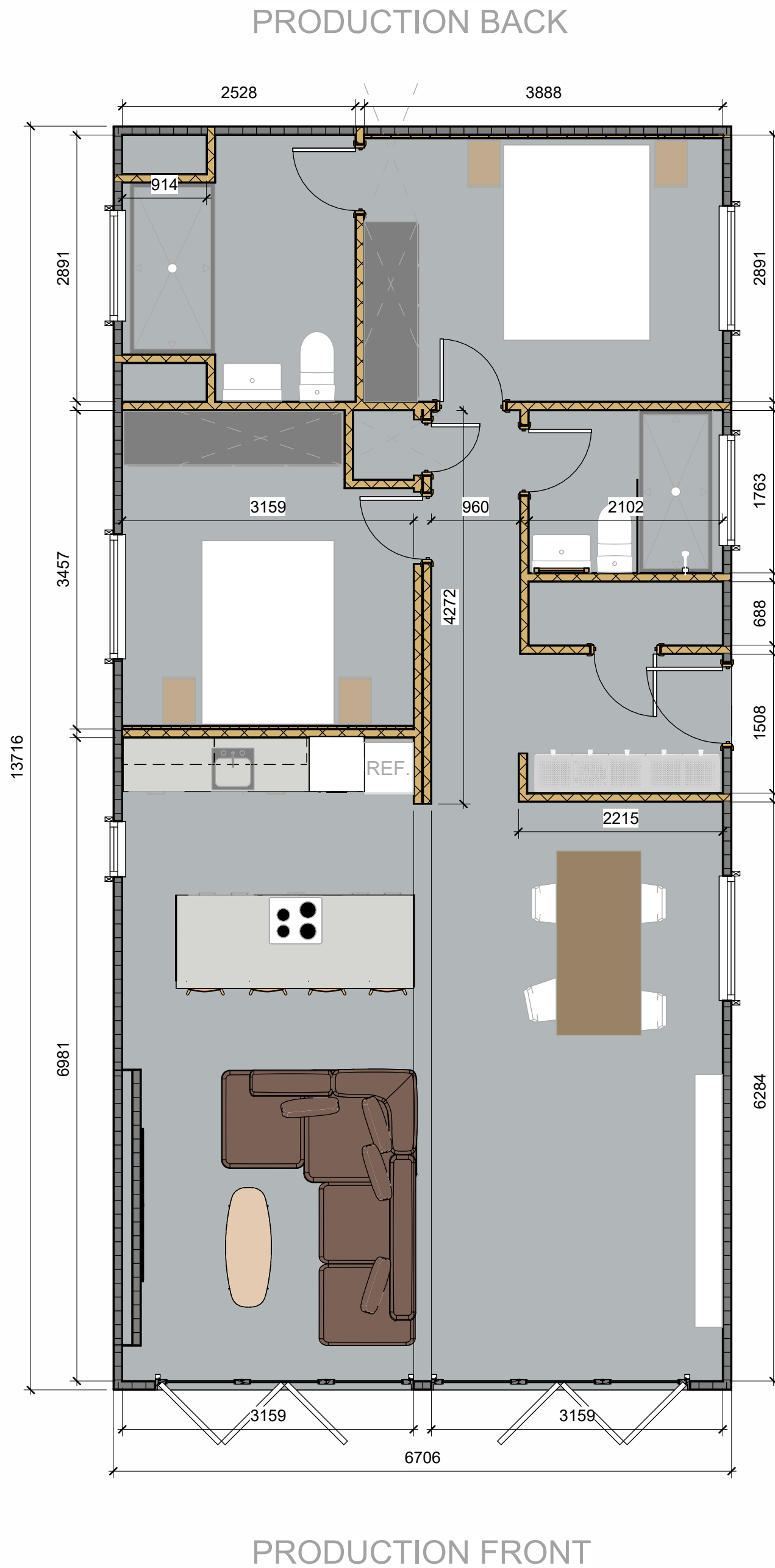
**YOUR RETREATS**

Junction 7 Business Park,
Bays D1-5,
Accrington BB5 5JW
www.yourretreats.co.uk

PROJECT
STANDARD LODGE

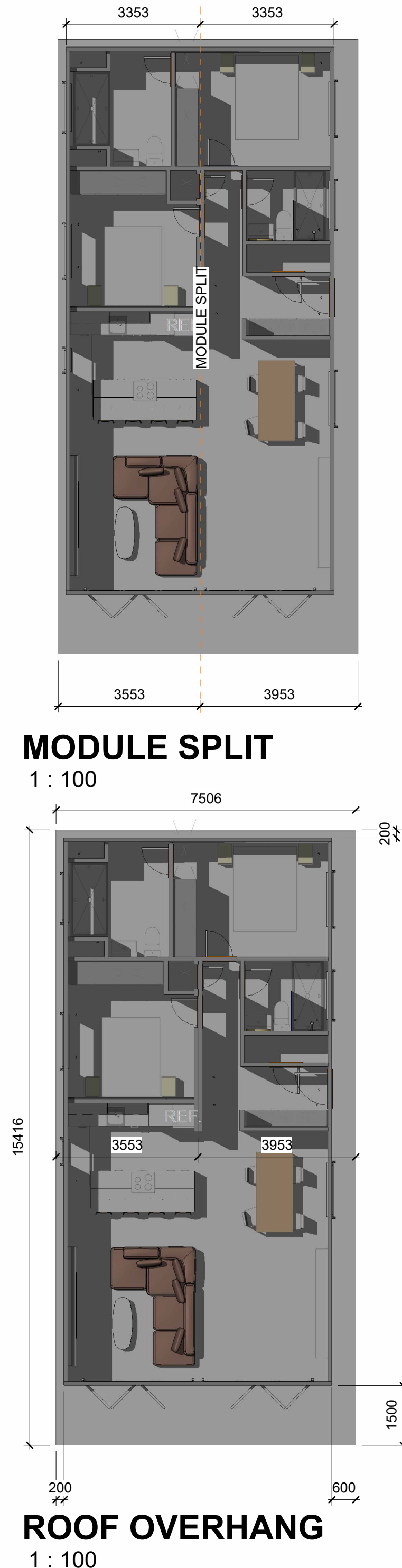
SITE:				KOS 45 X 22 2B							
TITLE:								VISUALISATION			
SCALE AT A2:				DATE:		DRAWN:		CHECKED:			
				18/06/24		DL		Checker			
PROJECT NO:				DRAWING NO:				REVISION:			
001				0000				1			

PRODUCTION LEFT

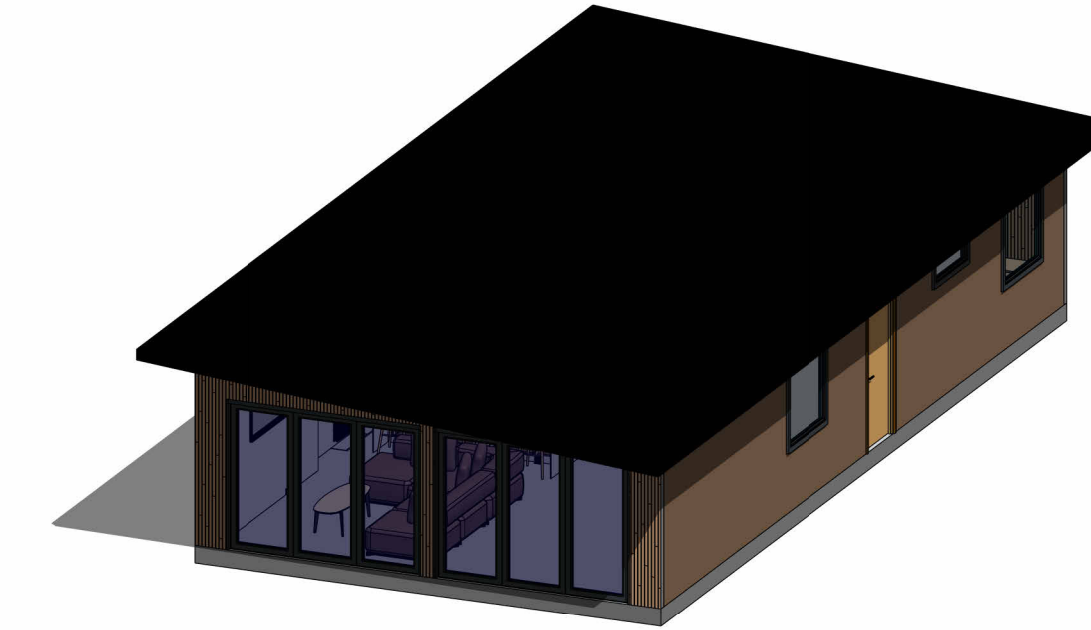


GENERAL ARRANGEMENT
1 : 50

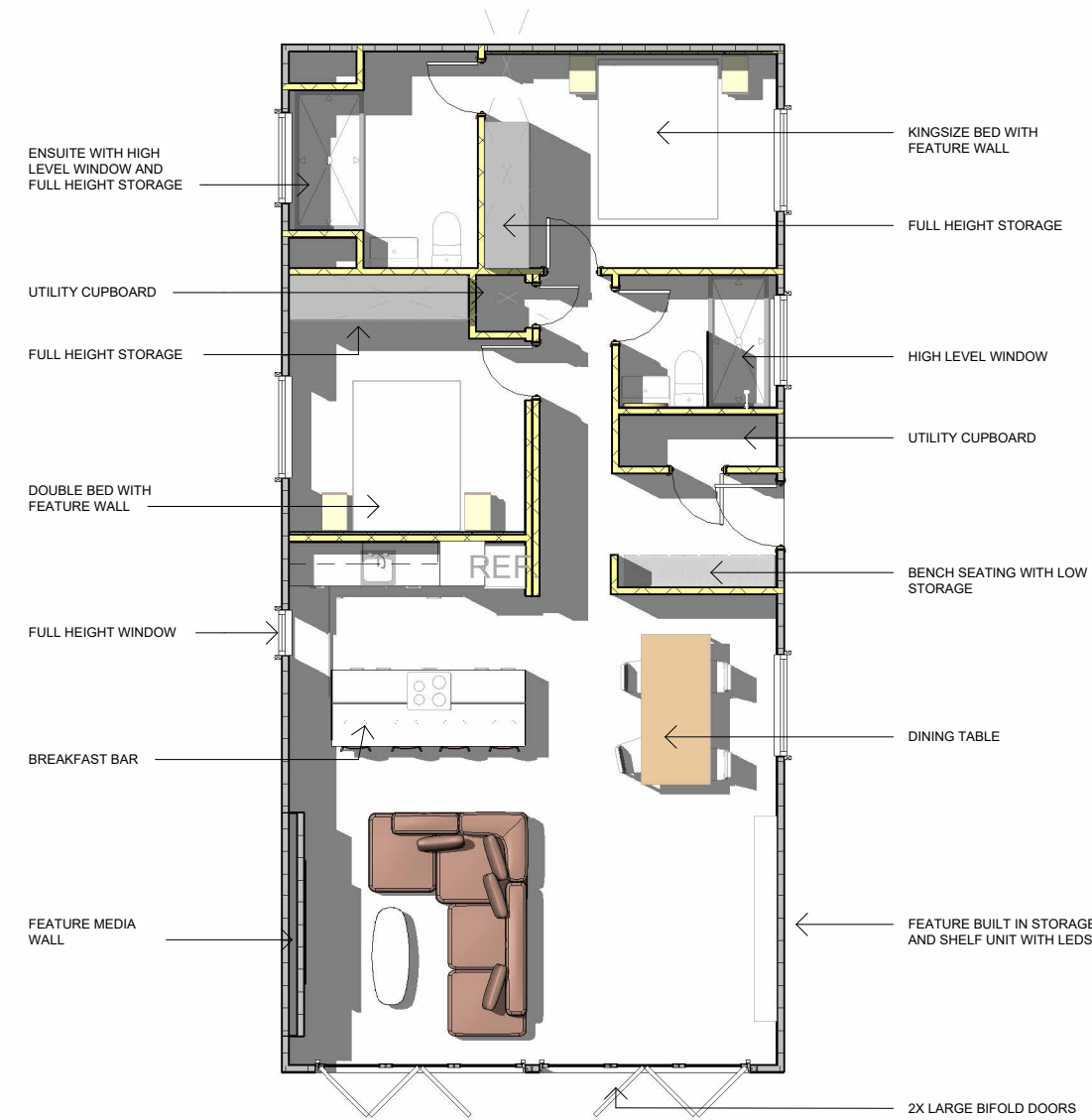
PRODUCTION RIGHT



ROOF OVERHANG
1 : 100



3D EXTERIOR VIEW



LAYOUT OVERVIEW
1 : 100

Notes:

PLEASE NOTE
Finished dimensions are may change slightly due to manufacturing tollerances

REV	DESCRIPTION	BY	DATE
1	ISSUED FOR INFORMATION		
STATUS: Project Status			

 **YOUR RETREATS**

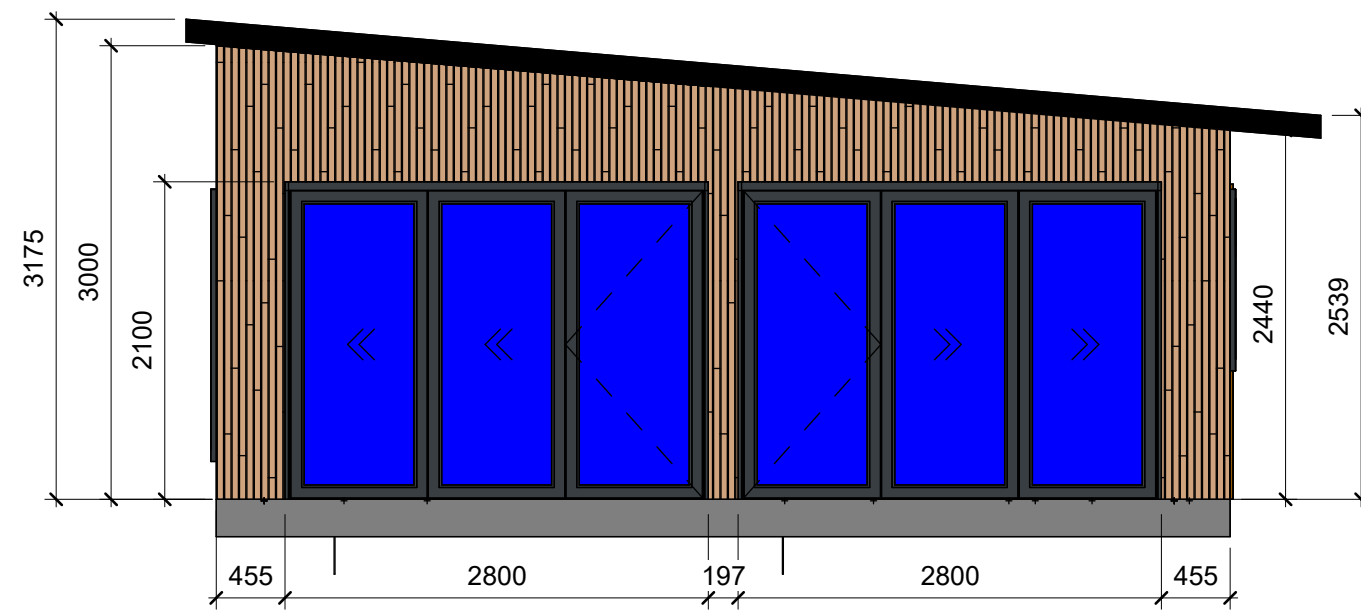
Junction 7 Business Park,
Bays D1-5,
Accrington BB5 5JW
www.yourretreats.co.uk

PROJECT
STANDARD LODGE

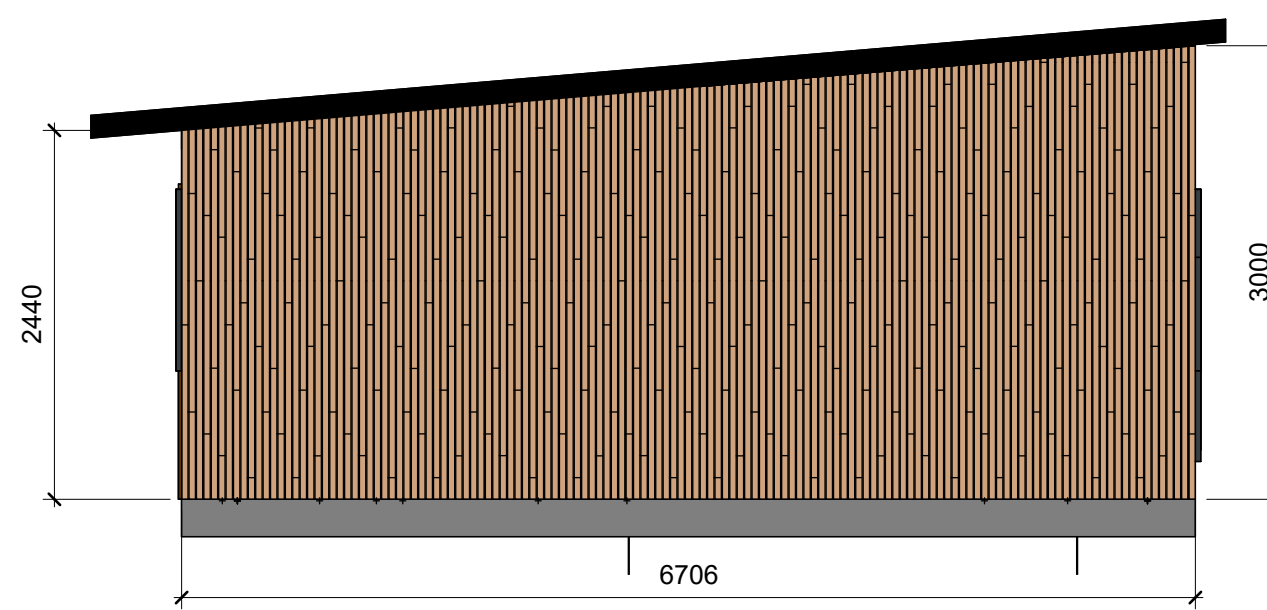
SITE:
KOS 45 X 22 2B

TITLE:
GENERAL ARRANGEMENT

SCALE AT A2: As indicated	DATE: 18/06/24	DRAWN: DL	CHECKED: Checker
PROJECT NO: 001	DRAWING NO: 1000	REVISION: 1	



PRODUCTION FRONT



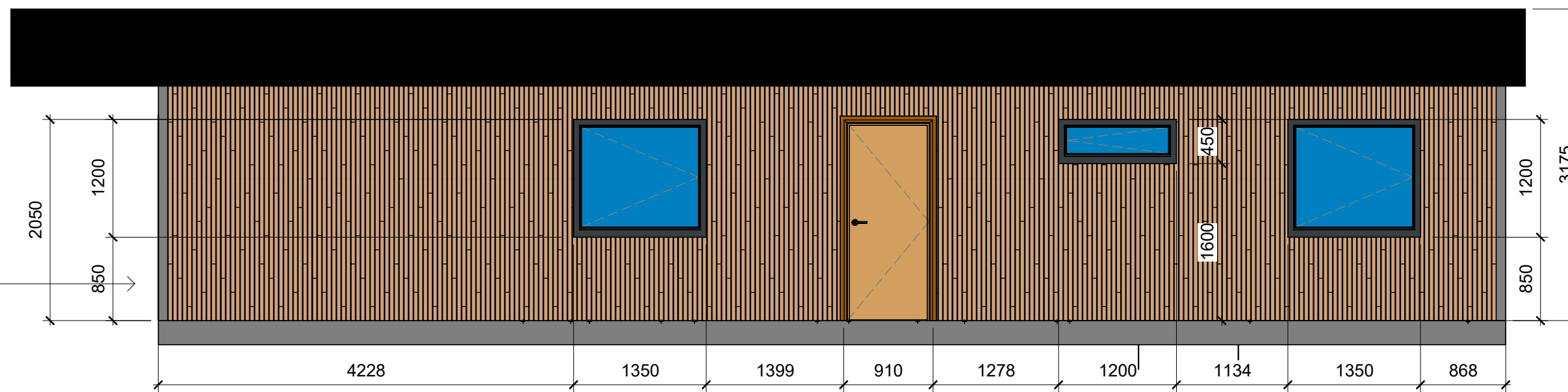
PRODUCTION BACK

EPDM ROOF
WITH
FRONT
OVER HANG
AND BUILT
IN LED
LIGHTING

VINYLTIT OAK
TURNER
MALT
CLADDING
WITH BLACK
SHADOW
GAP

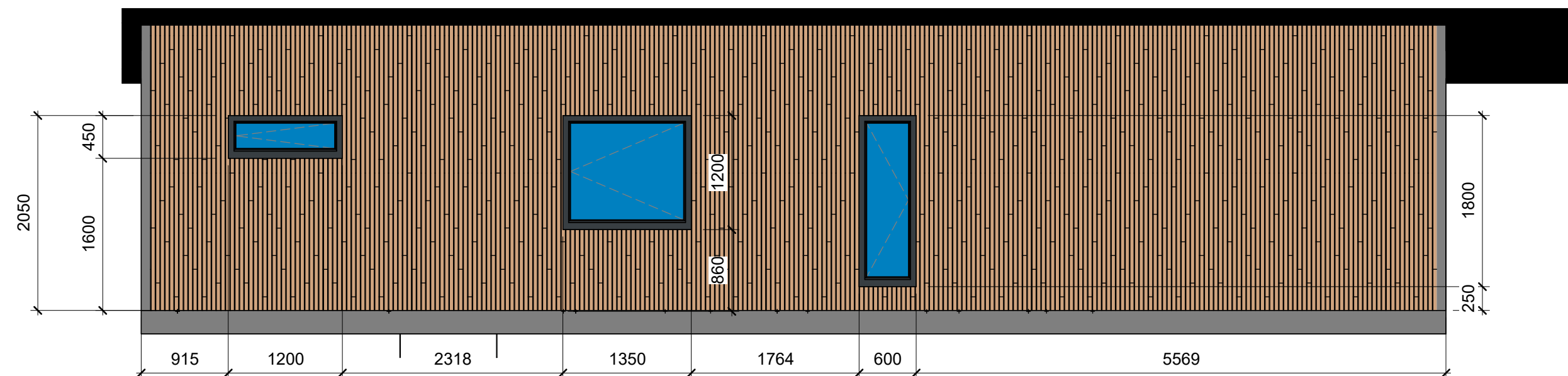
FRONT
1 : 50

BACK
1 : 50



PRODUCTION RIGHT

RIGHT
1 : 50



PRODUCTION LEFT

LEFT
1 : 50

Notes:

1	ISSUED FOR INFORMATION		
REV	DESCRIPTION	BY	DATE
STATUS: Project Status			

 **YOUR RETREATS**

Junction 7 Business Park,
Bays D1-5,
Accrington BB5 5JW
www.yourretreats.co.uk

PROJECT
STANDARD LODGE

SITE:				KOS 45 X 22 2B	
TITLE:					
ELEVATIONS					
SCALE AT A2:		DATE:	DRAWN:	CHECKED:	
1 : 50		18/06/24	DL	Checker	
PROJECT NO:		DRAWING NO:		REVISION:	
001		1100		1	