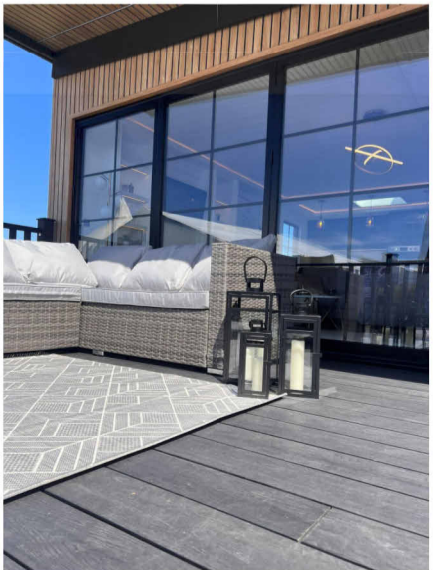
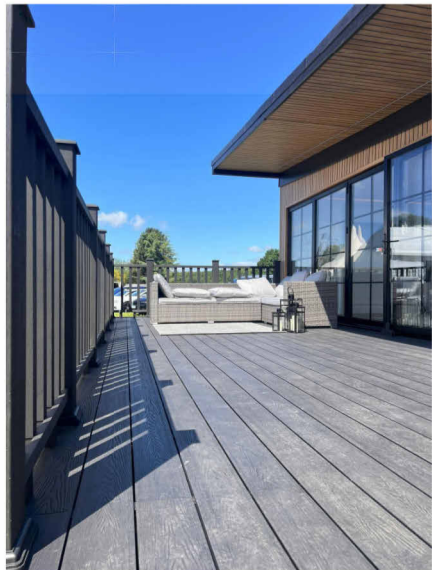
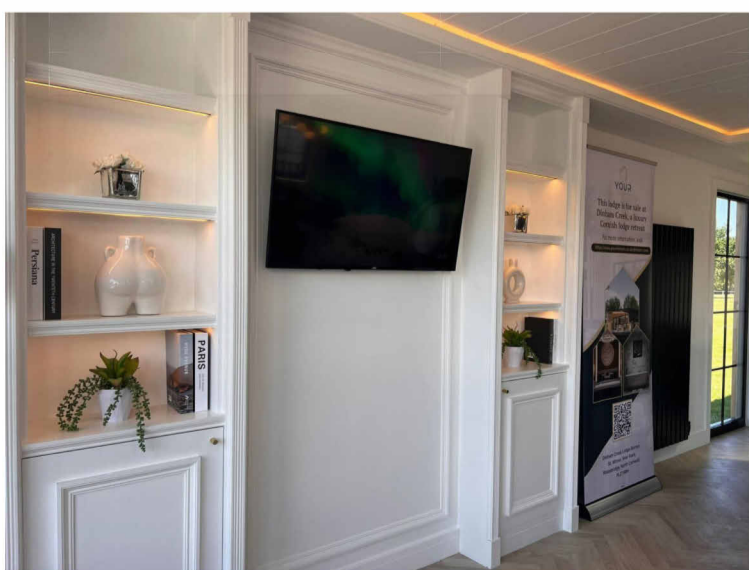
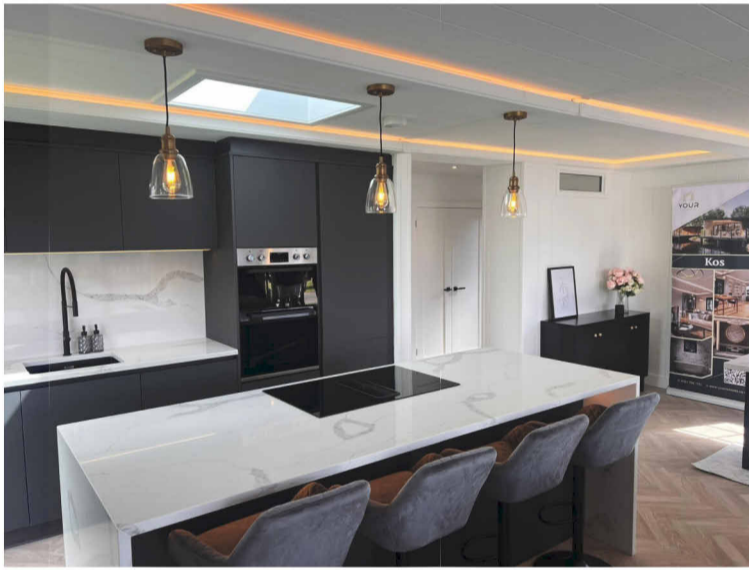
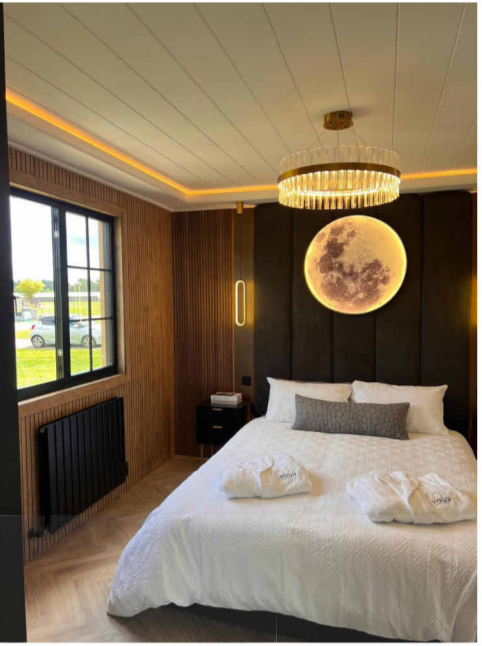
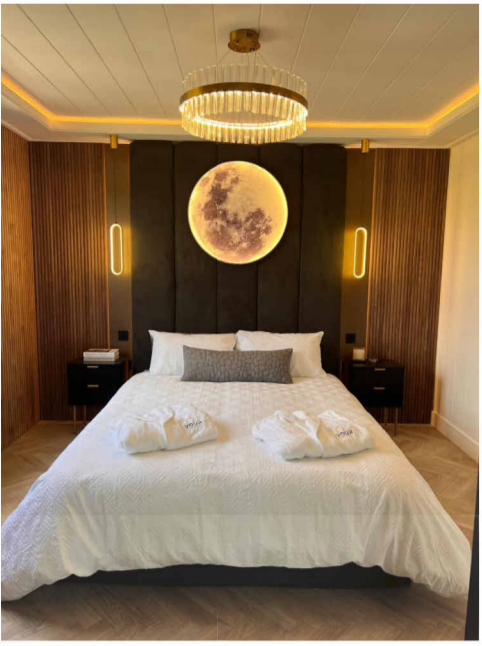
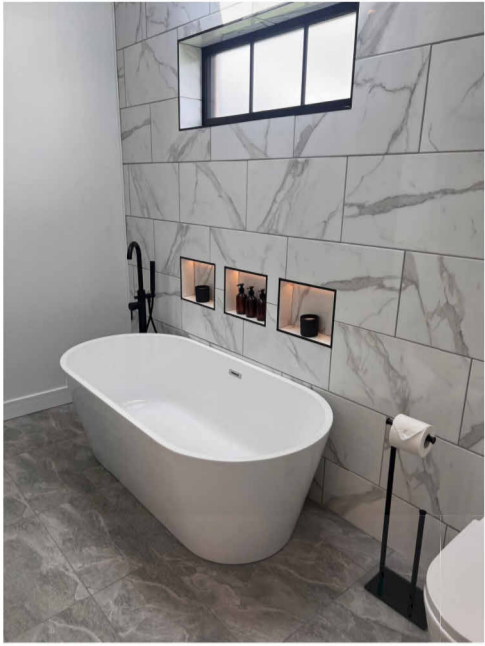




Kos DESIGN PACK

45ft x 22ft - 3 BEDROOM



Notes:

1	ISSUED FOR INFORMATION		
REV	DESCRIPTION	BY	DATE
STATUS: Project Status			

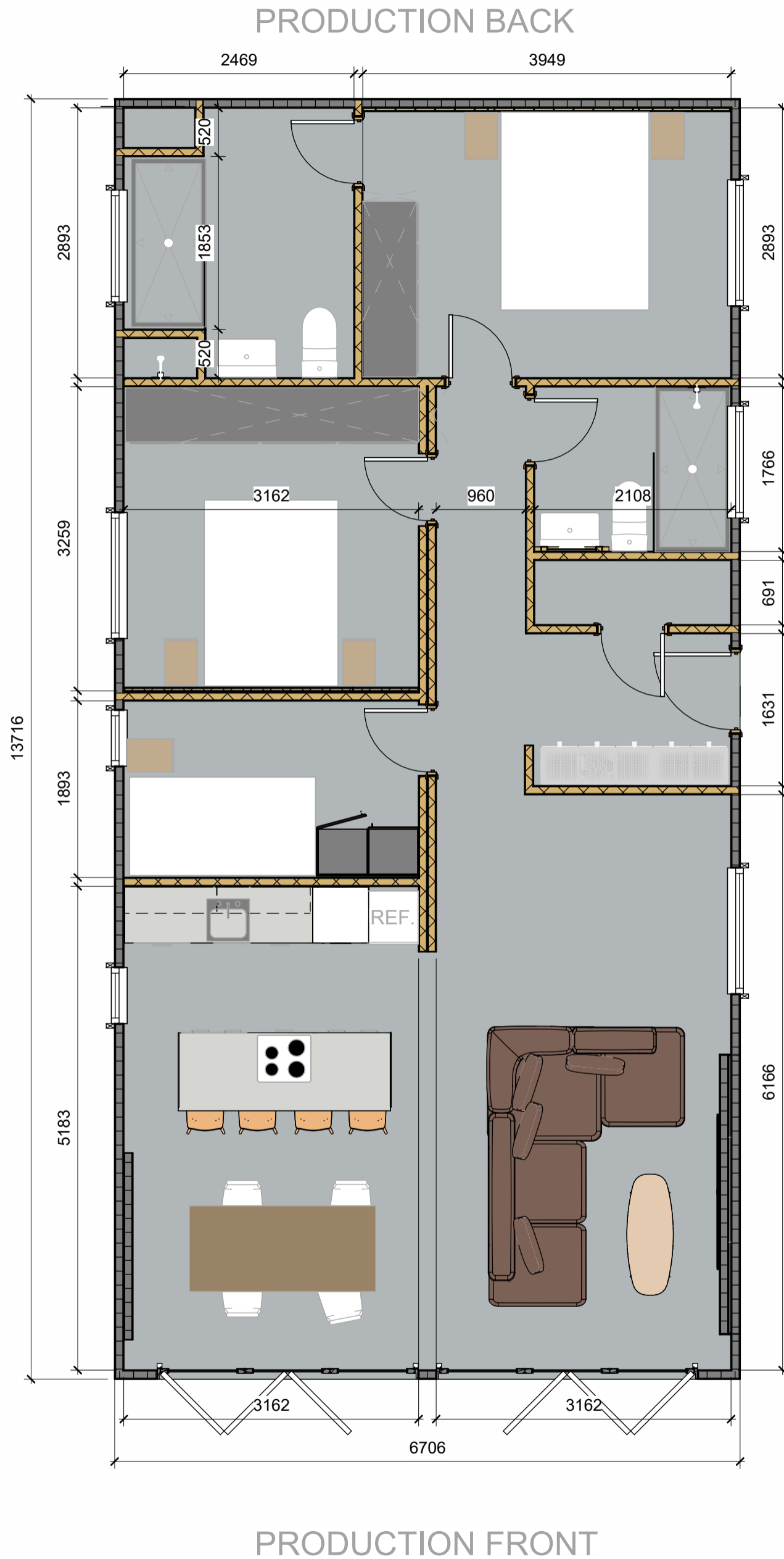
**YOUR RETREATS**

Junction 7 Business Park,
Bays D1-5,
Accrington BB5 5JW
www.yourretreats.co.uk

PROJECT
STANDARD LODGE

SITE:				KOS 45 X 22 3B							
TITLE:								VISUALISATION			
SCALE AT A2:				DATE:		DRAWN:		CHECKED:			
				18/06/24		DL		Checker			
PROJECT NO:				DRAWING NO:				REVISION:			
001				0000				1			

PRODUCTION LEFT

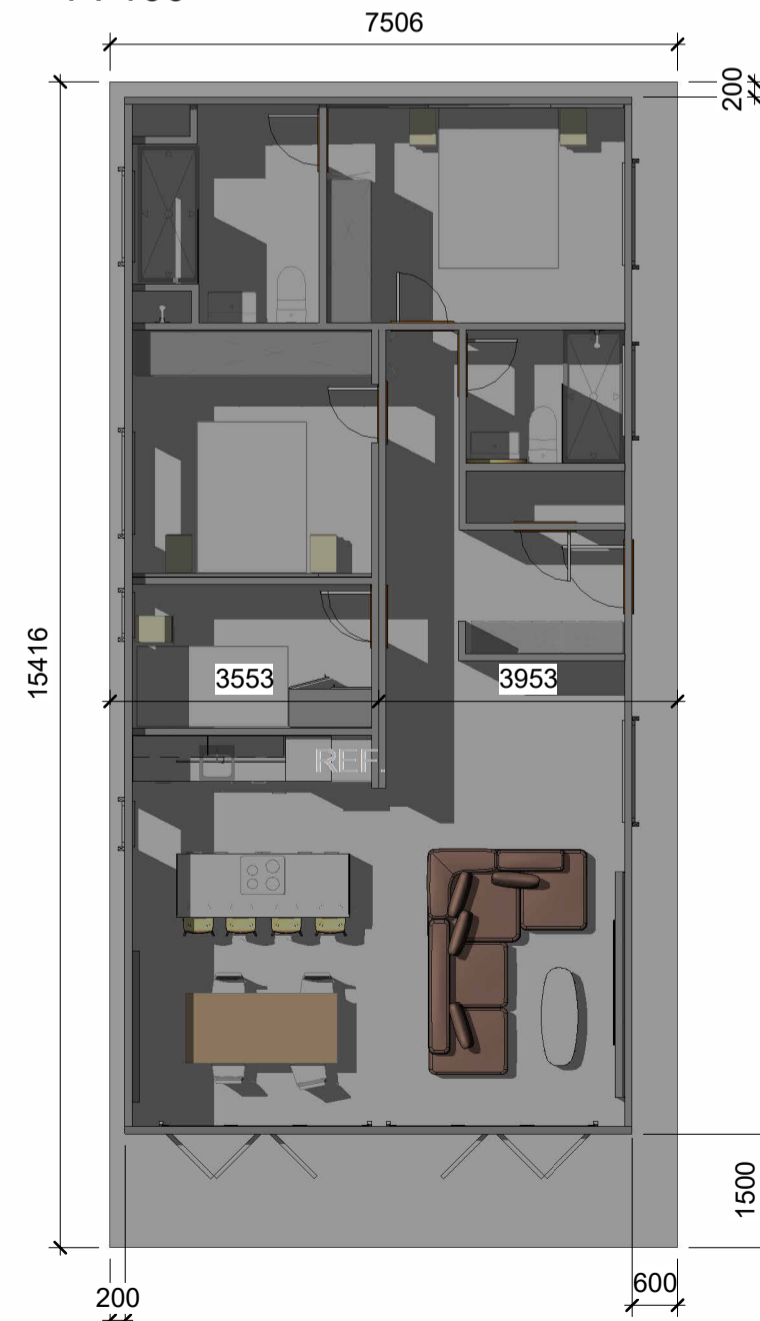


GENERAL ARRANGEMENT
1 : 50

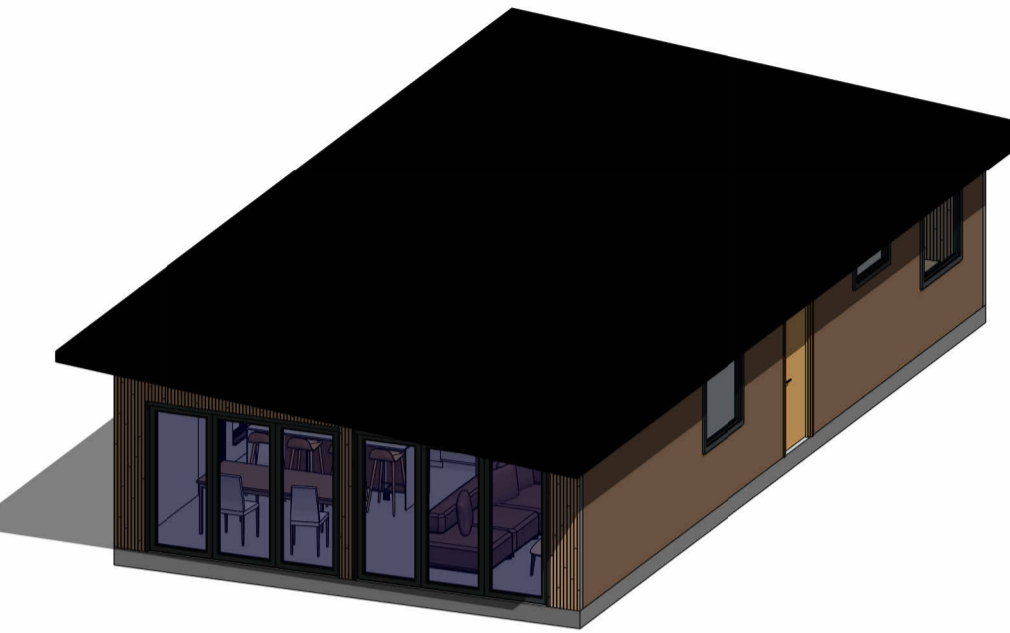
PRODUCTION RIGHT



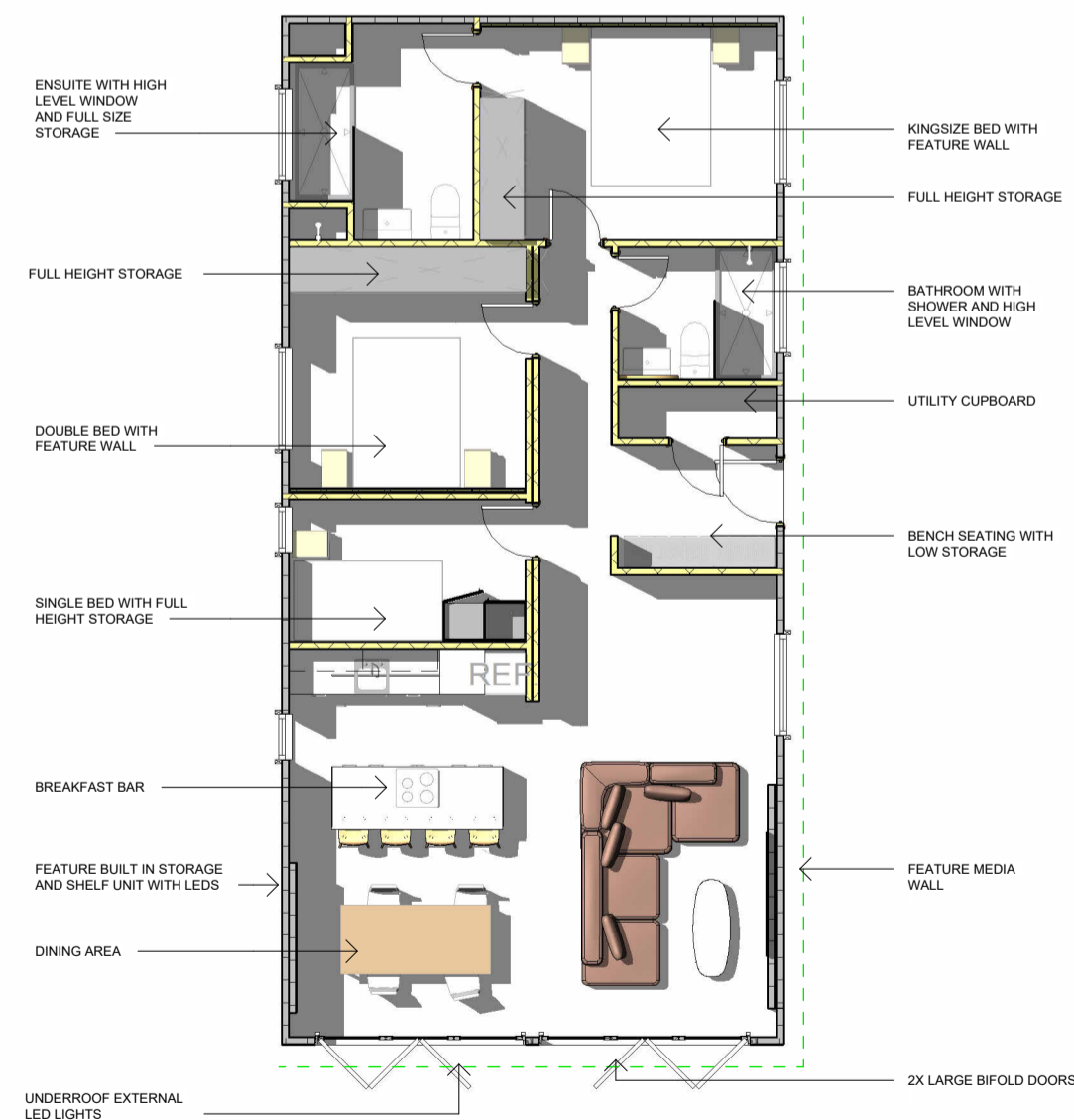
MODULE SPLIT
1 : 100



ROOF OVERHANG
1 : 100



3D EXTERIOR VIEW



LAYOUT OVERVIEW
1 : 100

Notes:

PLEASE NOTE

Finished dimensions
are may change
slightly due to
manufacturing
tollerances

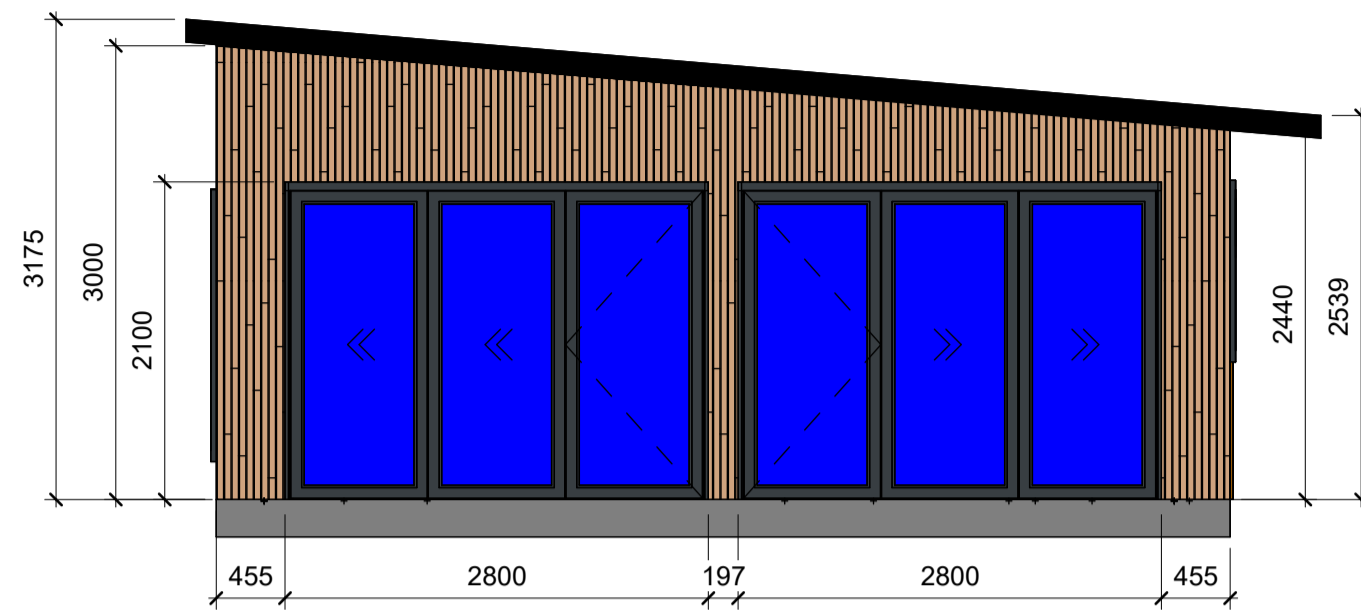
1	ISSUED FOR INFORMATION		
REV	DESCRIPTION	BY	DATE
STATUS: Project Status			

 **YOUR RETREATS**

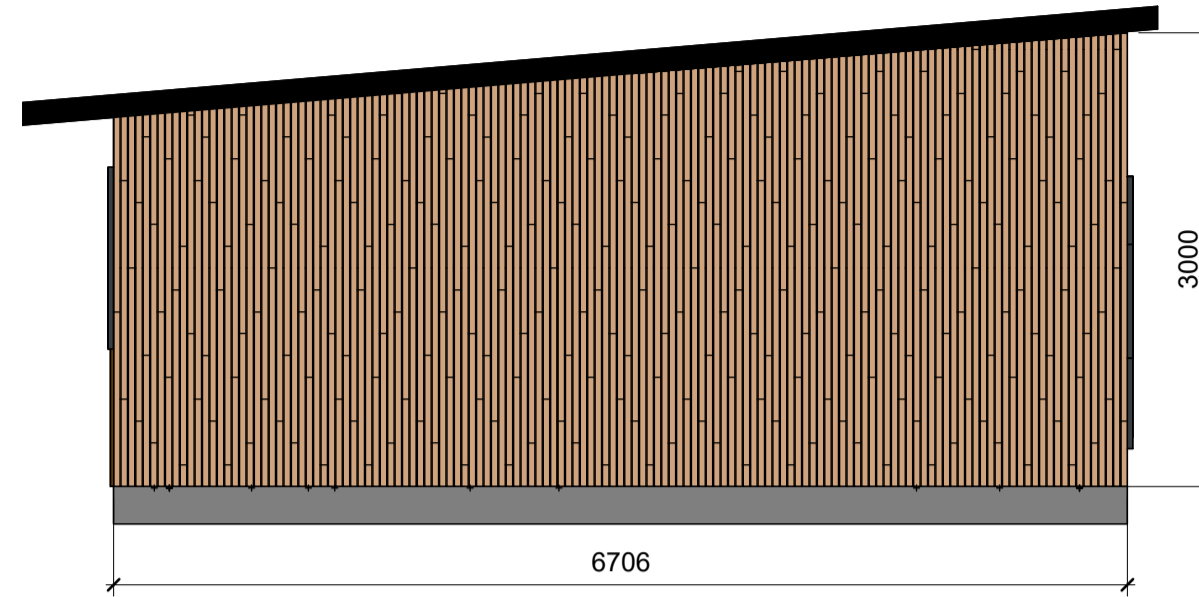
Junction 7 Business Park,
Bays D1-5,
Accrington BB5 5JW
www.yourretreats.co.uk

PROJECT
STANDARD LODGE

SITE:	KOS 45 X 22 3B		
TITLE:	GENERAL ARRANGEMENT		
SCALE AT A2:	DATE:	DRAWN:	CHECKED:
As indicated	18/06/24	DL	Checker
PROJECT NO:	DRAWING NO:	REVISION:	
001	1000	1	



PRODUCTION FRONT



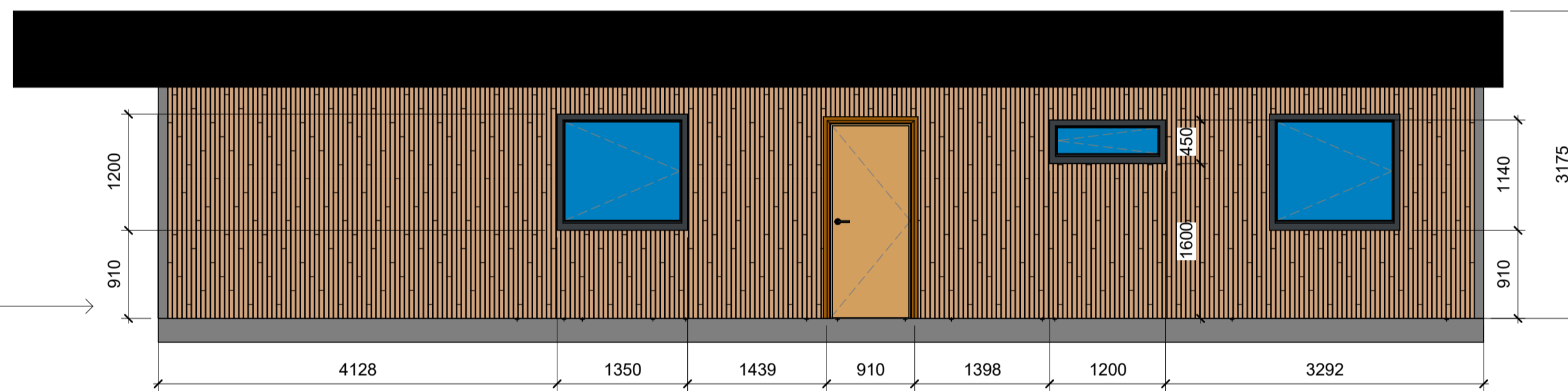
PRODUCTION BACK

EPDM ROOF WITH FRONT OVER HANG AND BUILT IN LED LIGHTING

VINYLIT OAK TURNER MALT CLADDING WITH BLACK SHADOW GAP

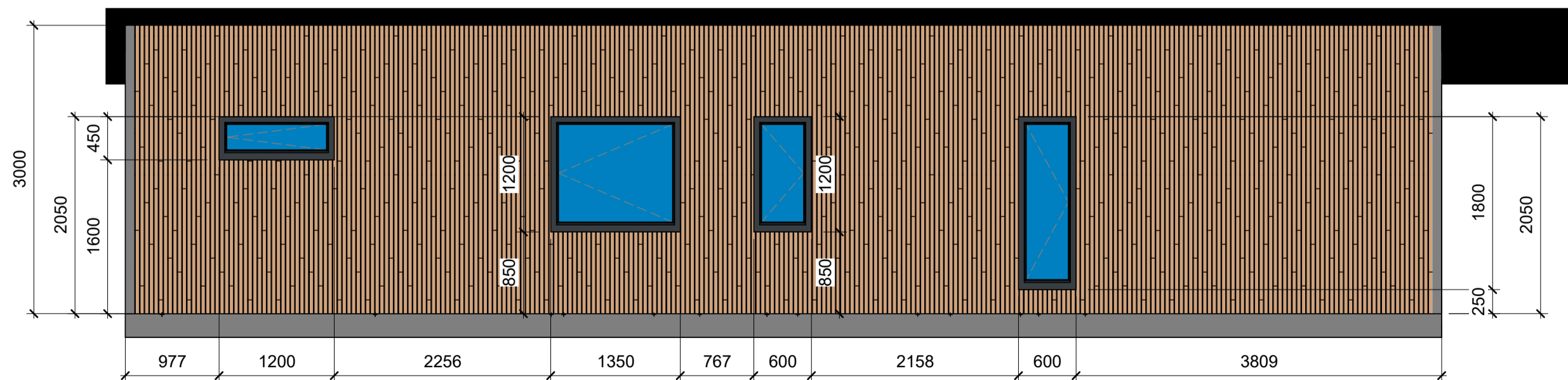
FRONT
1 : 50

BACK
1 : 50



PRODUCTION RIGHT

RIGHT
1 : 50



PRODUCTION LEFT

LEFT
1 : 50

Notes:

1	ISSUED FOR INFORMATION		
REV	DESCRIPTION	BY	DATE
STATUS: Project Status			


Junction 7 Business Park,
Bays D1-5,
Accrington BB5 5JW
www.yourretreats.co.uk

PROJECT
STANDARD LODGE

SITE:				KOS 45 X 22 3B			
TITLE:							
ELEVATIONS							
SCALE AT A2:		DATE:		DRAWN:		CHECKED:	
1 : 50		18/06/24		DL		Checker	
PROJECT NO:		DRAWING NO:				REVISION:	
001		1100				1	