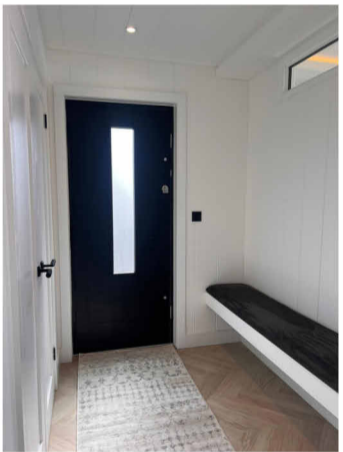
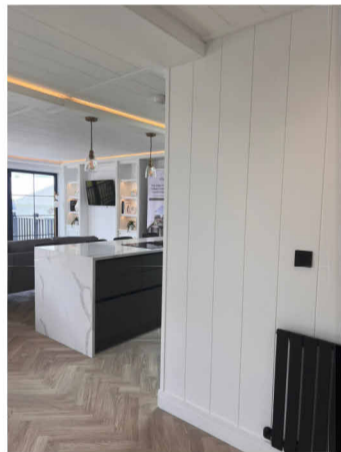
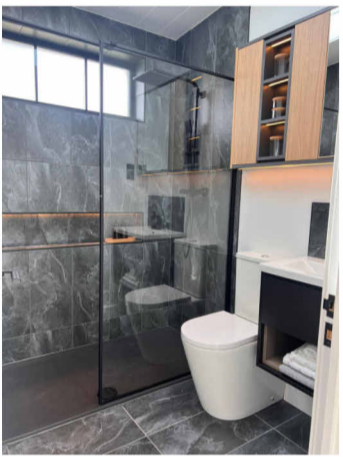
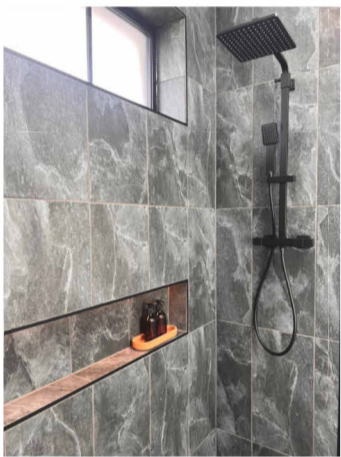
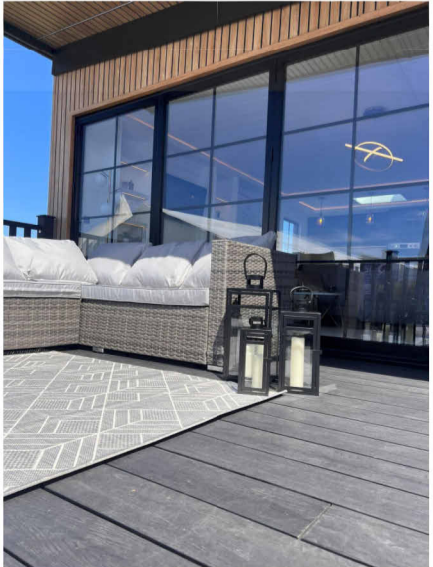
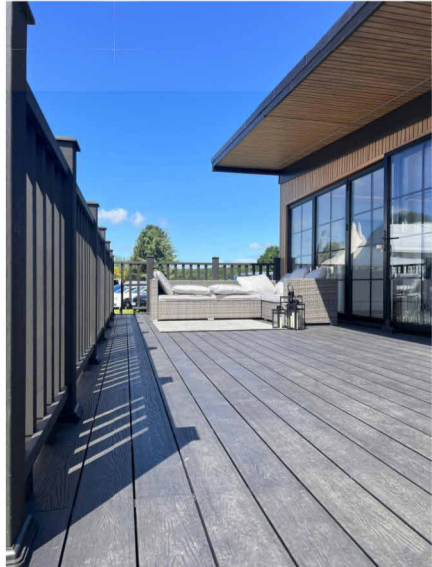
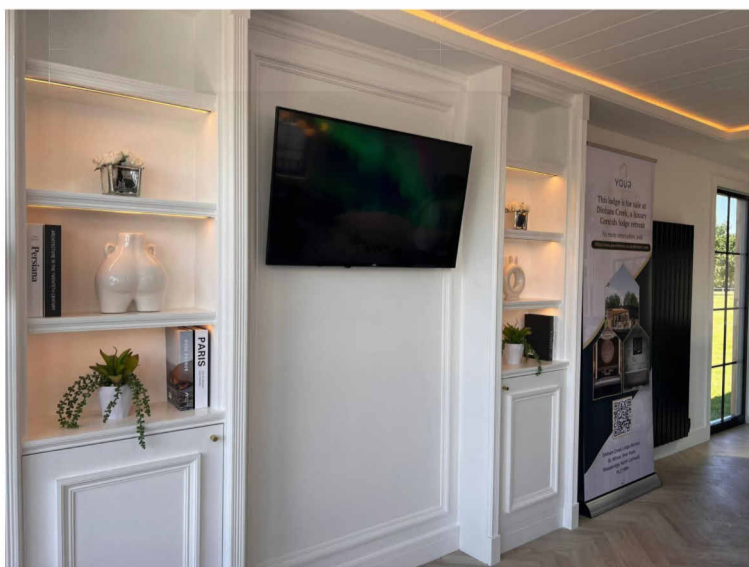
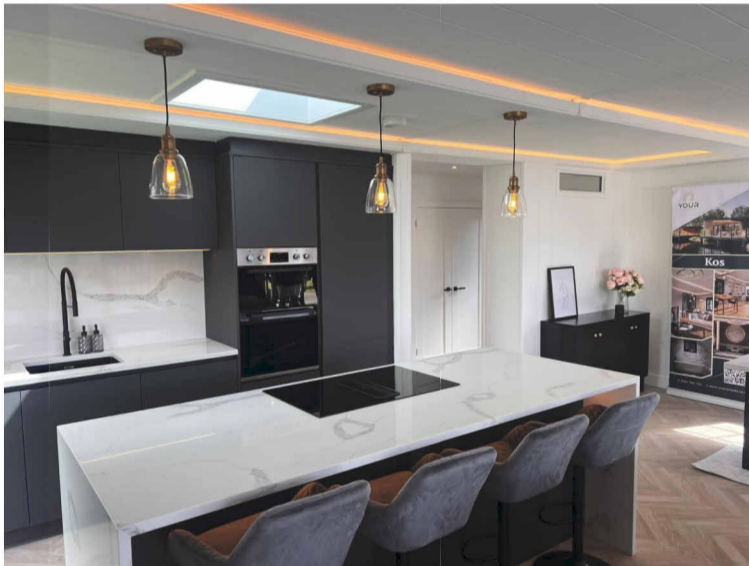
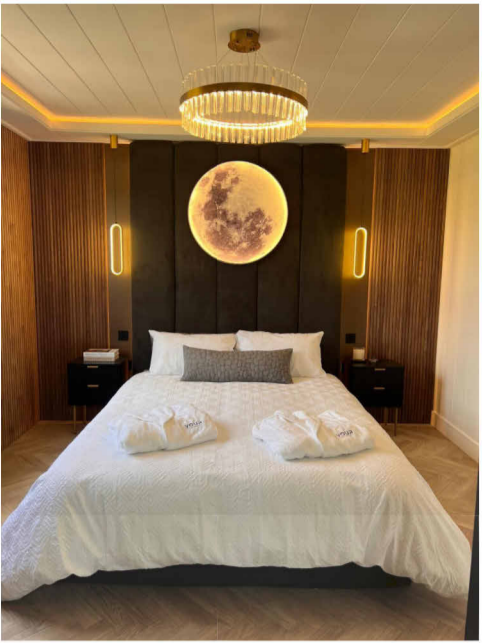
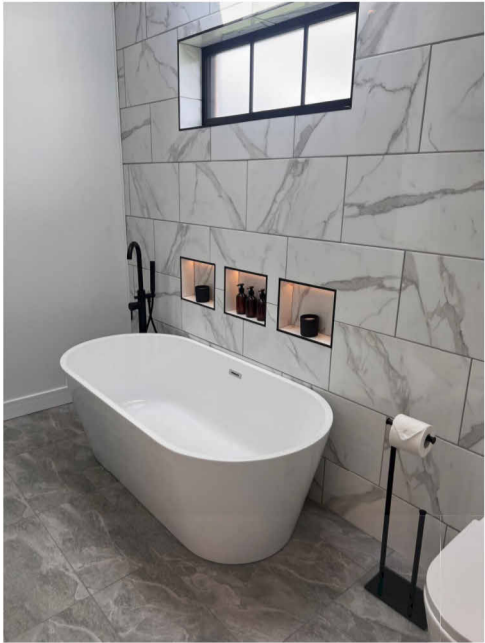




# Kos DESIGN PACK

47ft x 22ft - 2 BEDROOM



Notes:

1	ISSUED FOR INFORMATION		
REV	DESCRIPTION	BY	DATE
STATUS: Project Status			

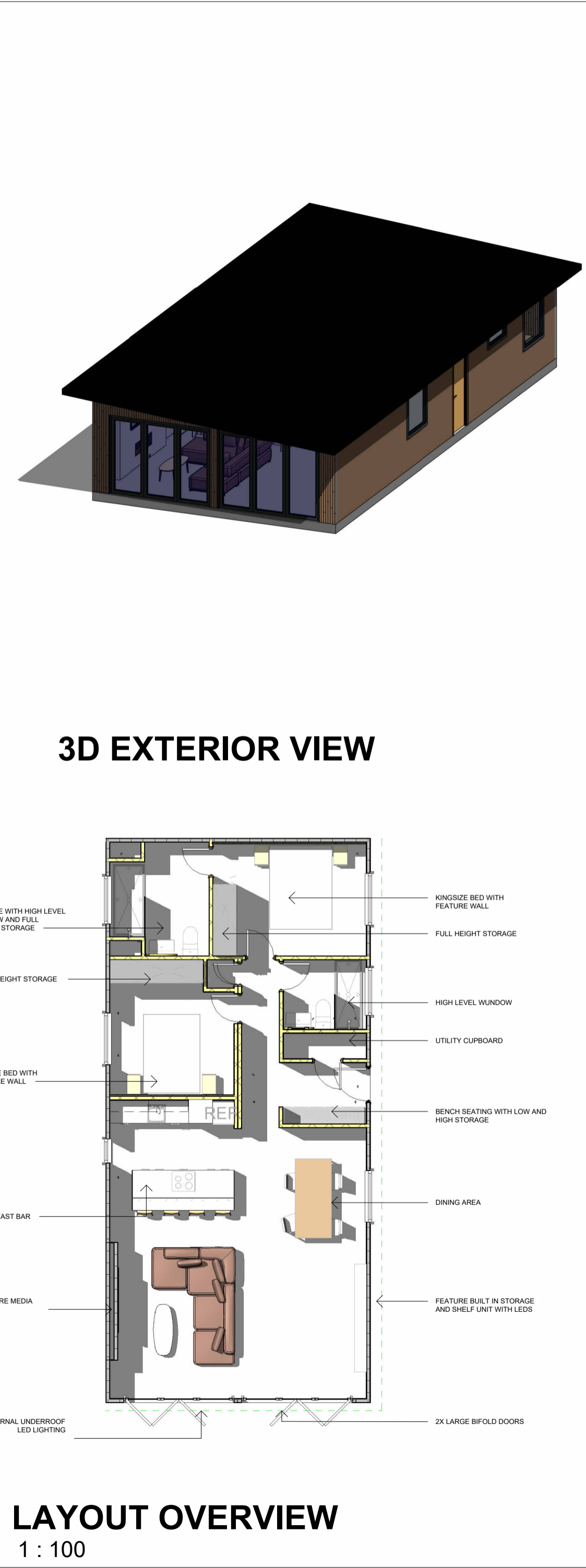
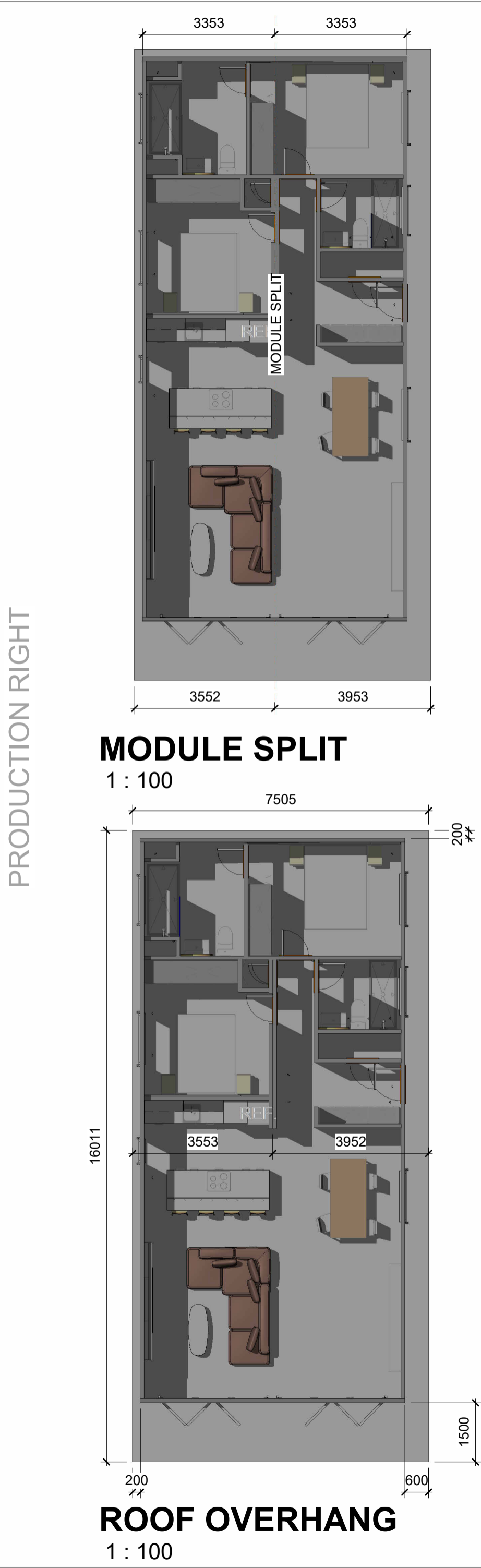
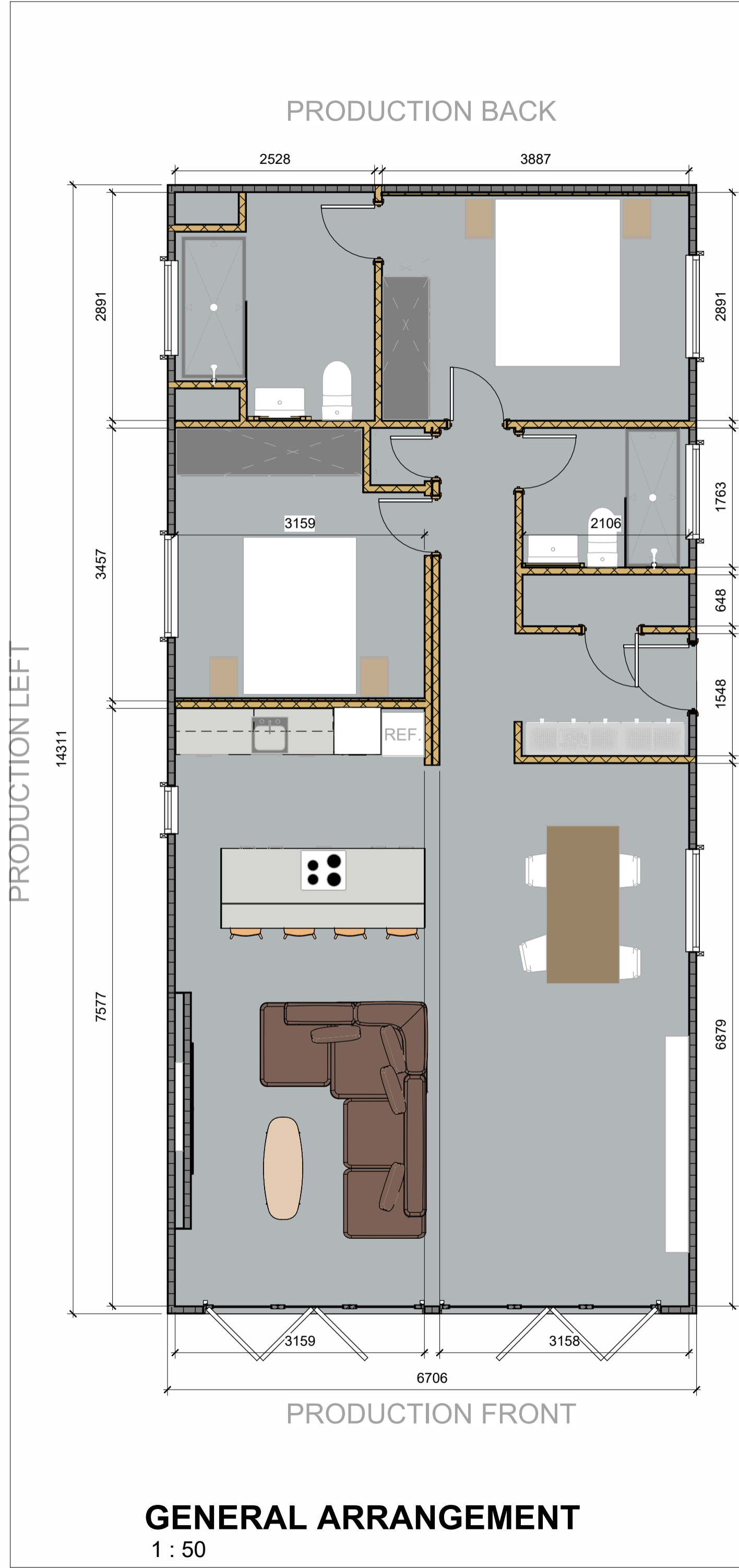


**YOUR RETREATS**

Junction 7 Business Park,  
Bays D1-5,  
Accrington BB5 5JW  
[www.yourretreats.co.uk](http://www.yourretreats.co.uk)

PROJECT
STANDARD LODGE

SITE:				KOS 47 X 22 2B							
TITLE:								VISUALISATION			
SCALE AT A2:				DATE:		DRAWN:		CHECKED:			
				18/06/24		DL		Checker			
PROJECT NO:				DRAWING NO:				REVISION:			
001				0000				1			



Notes:

PLEASE NOTE

Finished dimensions are may change slightly due to manufacturing tollerances

REV	DESCRIPTION	BY	DATE
1	ISSUED FOR INFORMATION		

STATUS: Project Status

**YOUR RETREATS**

Junction 7 Business Park,  
Bays D1-5,  
Accrington BB5 5JW  
[www.yourretreats.co.uk](http://www.yourretreats.co.uk)

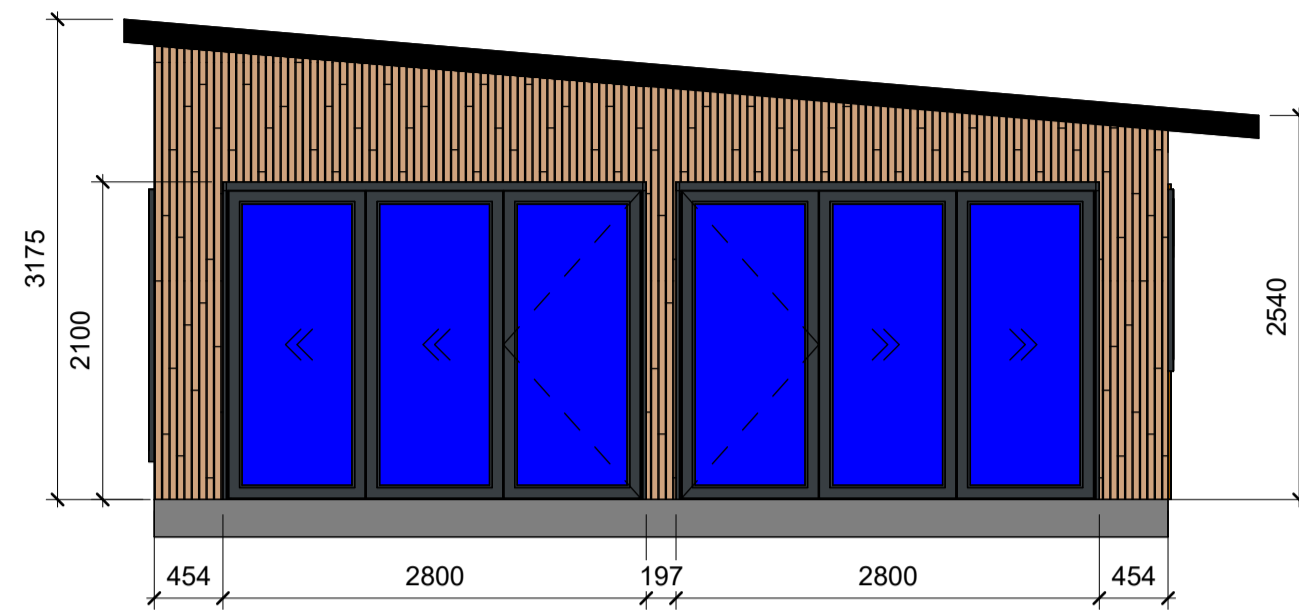
PROJECT: STANDARD LODGE

SITE: KOS 47 X 22 2B

TITLE: GENERAL ARRANGEMENT

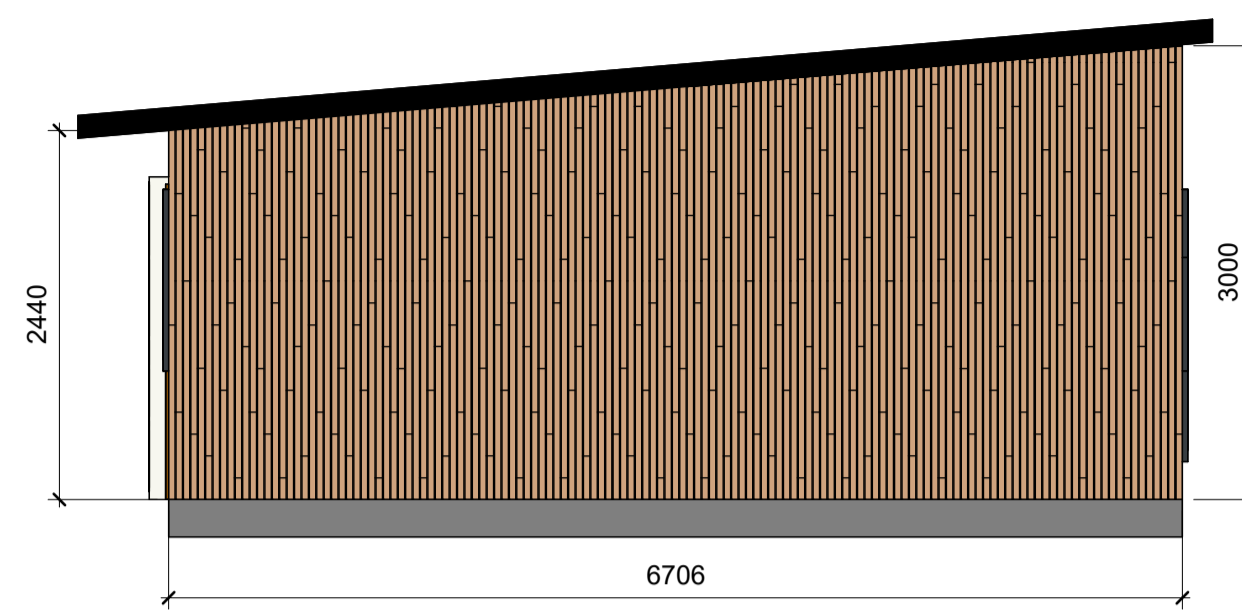
SCALE AT A2:	DATE:	DRAWN:	CHECKED:
As indicated	18/06/24	DL	Checker

PROJECT NO:	DRAWING NO:	REVISION:
001	1000	1



PRODUCTION FRONT

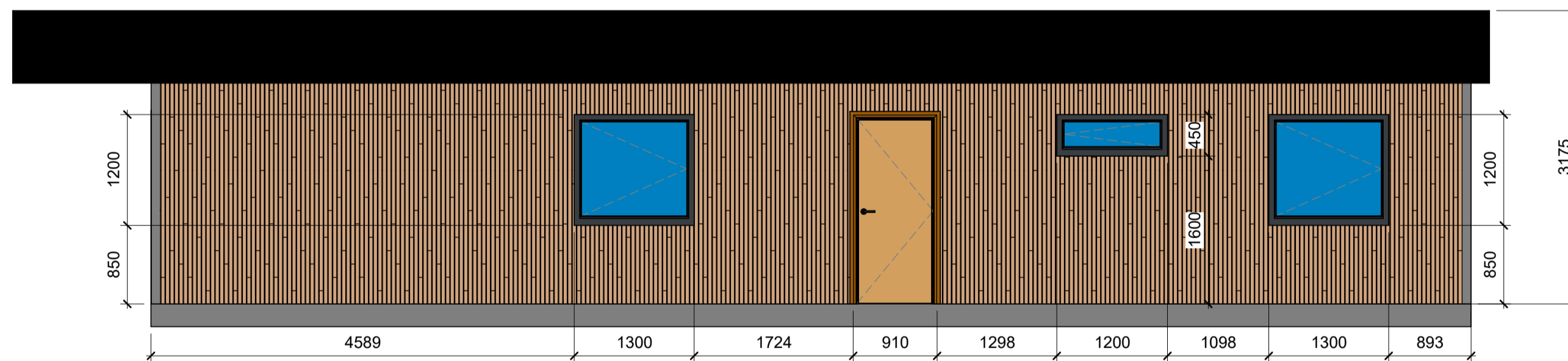
**FRONT**  
1 : 50



PRODUCTION BACK

**BACK**  
1 : 50

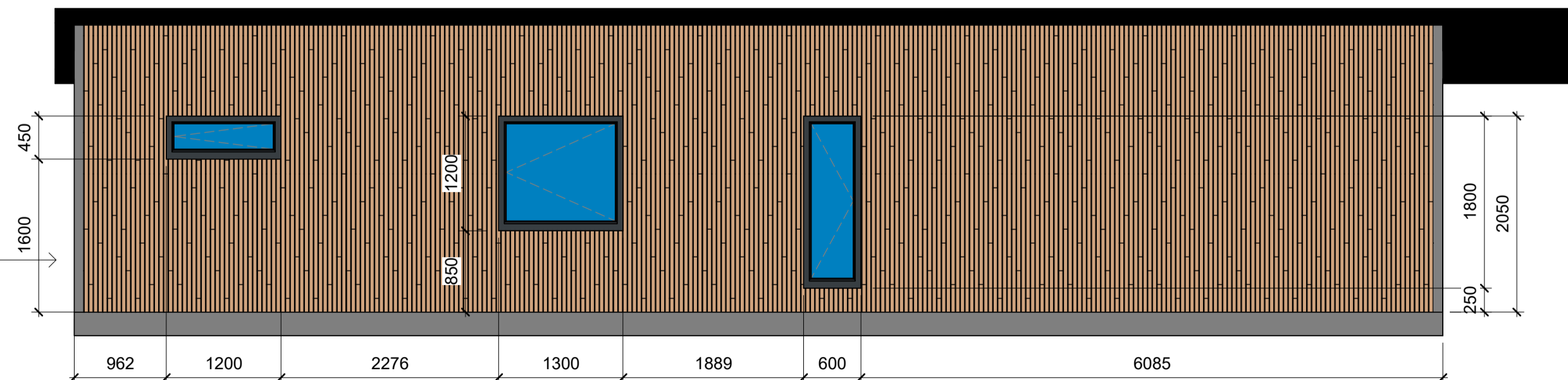
EPDM ROOF WITH FRONT OVER HANG AND BUILT IN LED LIGHTING →



PRODUCTION RIGHT

**RIGHT**  
1 : 50

VINYLTIT OAK TURNER MALT CLADDING WITH BLACK SHADOW GAP →



PRODUCTION LEFT

**LEFT**  
1 : 50

Notes:

1	ISSUED FOR INFORMATION		
REV	DESCRIPTION	BY	DATE
STATUS: Project Status			

 **YOUR RETREATS**

Junction 7 Business Park,  
Bays D1-5,  
Accrington BB5 5JW  
[www.yourretreats.co.uk](http://www.yourretreats.co.uk)

PROJECT
STANDARD LODGE

SITE:				KOS 47 X 22 2B	
TITLE:					
ELEVATIONS					
SCALE AT A2:		DATE:		DRAWN:	CHECKED:
1 : 50		18/06/24		DL	Checker
PROJECT NO:		DRAWING NO:			REVISION:
001		1100			1